



JULY 2021

MORDIALLOC FREEWAY



We're building the Mordialloc Freeway to connect the Mornington Peninsula Freeway to the Dingley Bypass

We completed another 57,000 hours of construction in June as works to landscape the area, asphalt new lanes and install noise barriers continue. Next week, we'll install the final bridge beams for the Project over Springvale Road.

Once all the bridges are built, we'll turn our focus to the finishing touches for the Freeway and local roads over the coming months.

In the past month, we've also:

- finished installing the drainage underneath the twin bridges over the Waterways wetlands
- poured the concrete for the new shared walking and cycling path alongside Mordialloc Creek

- worked with the Dingley Men's Shed to build two new bird watching shelters at the Braeside Park Wetlands
- started installing the safety barriers on the twin bridges over the Waterways wetlands
- started pouring the concrete deck for the bridge over Lower Dandenong Road.

What we're doing

In July, we'll:

- install the Freeway's final bridge beams at Springvale Road
- continue pouring the concrete deck and install drainage for the bridge over Lower Dandenong Road
- begin building the rock embankment wall for the bridge over Bowen Parkway

- pour the concrete decks and install the safety barriers for the bridges over Governor and Springvale roads
- continue installing the world's first 75% recycled plastic noise walls along the Freeway
- continue planting a million trees and plants along the Freeway.

We'll carry out most of these works during the day, **Monday to Friday between 7am and 7pm** and on **Saturdays between 7am and 3.30pm**. Some works may need to happen at night to minimise impacts on traffic and utility services, but we'll let you know in advance of works outside our normal hours.

 **SIGN UP FOR PROJECT UPDATES**
roadprojects.vic.gov.au

Authorised by the Victorian Government, 1 Treasury Place, Melbourne



Planning your journey

Springvale Road closures

To safely install the new bridge beams, we'll be closing Springvale Road between Wells and Pillars roads each day from **Monday 19 to Friday 23 July between 9.30am and 3pm**:

- the northbound lanes will be closed between **9.30am and 3pm each day on Monday 19 and Tuesday 20 July**
- Springvale Road will be closed to all traffic between **9.30am and 3pm each day from Wednesday 21 to Friday 23 July**.

For northbound traffic, detours will be in place via Wells Road, Governor Road and Lower Dandenong Road. Northbound traffic on the Mornington Peninsula Freeway should exit early at Frankston-Dandenong Road and detour via Greens and Hutton roads.

For southbound traffic, detours will be in place via Wells Road and Governor Road, and Mornington Peninsula Freeway.

You'll still be able to access the Mornington Peninsula Freeway when travelling southbound on Springvale Road, or via Wells Road and Thames Promenade.

There will be bus stop closures and detours in place for Route 902 bus services.

Please visit ptv.vic.gov.au for more information and to plan your journey.

There will be traffic delays while we complete the work so please allow an additional 30 minutes for your journey.

Stay up to date on upcoming disruptions, visit bigbuild.vic.gov.au/disruptions.



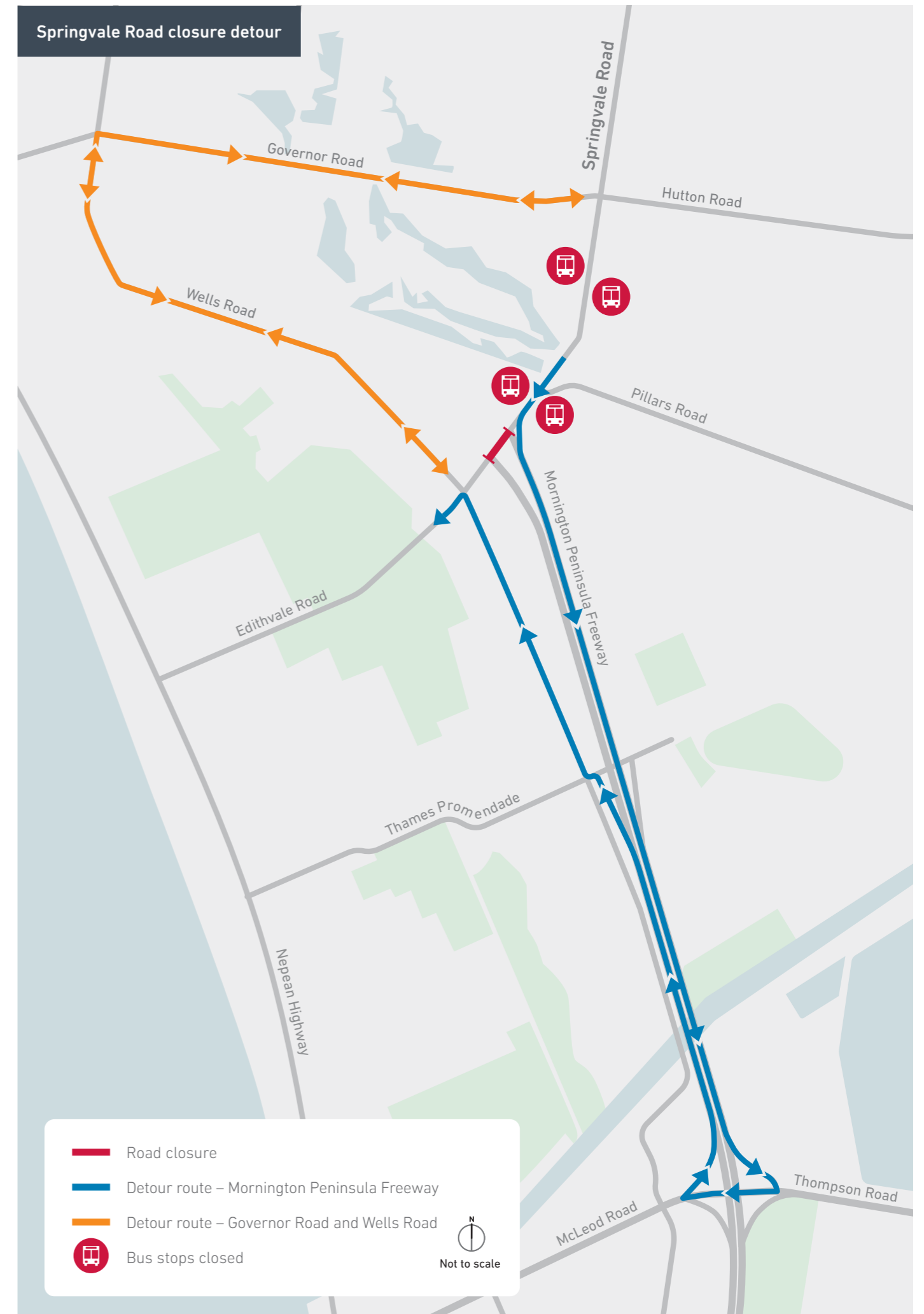
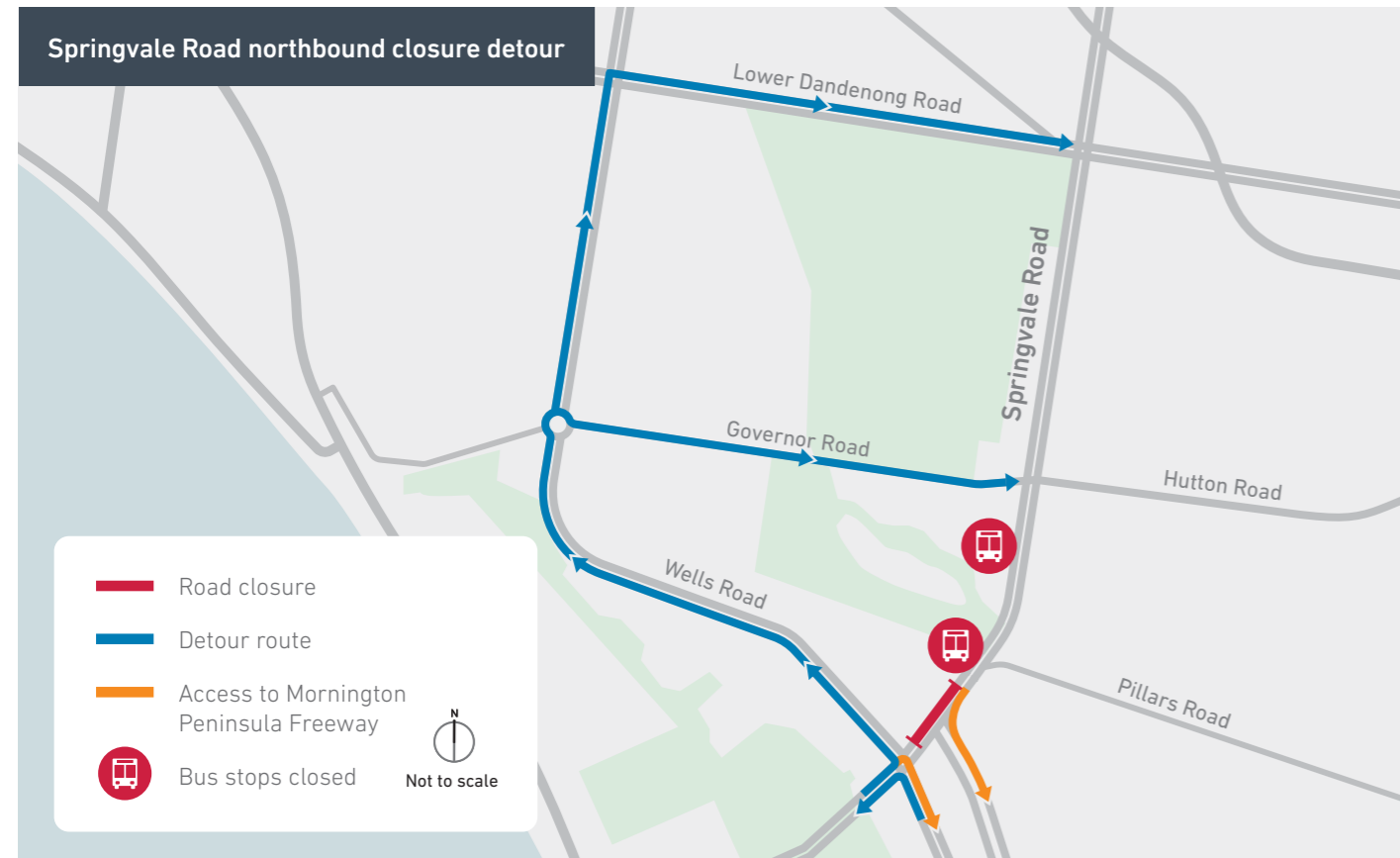
Check out our latest video flying over the Freeway to see what's happening from a unique perspective.

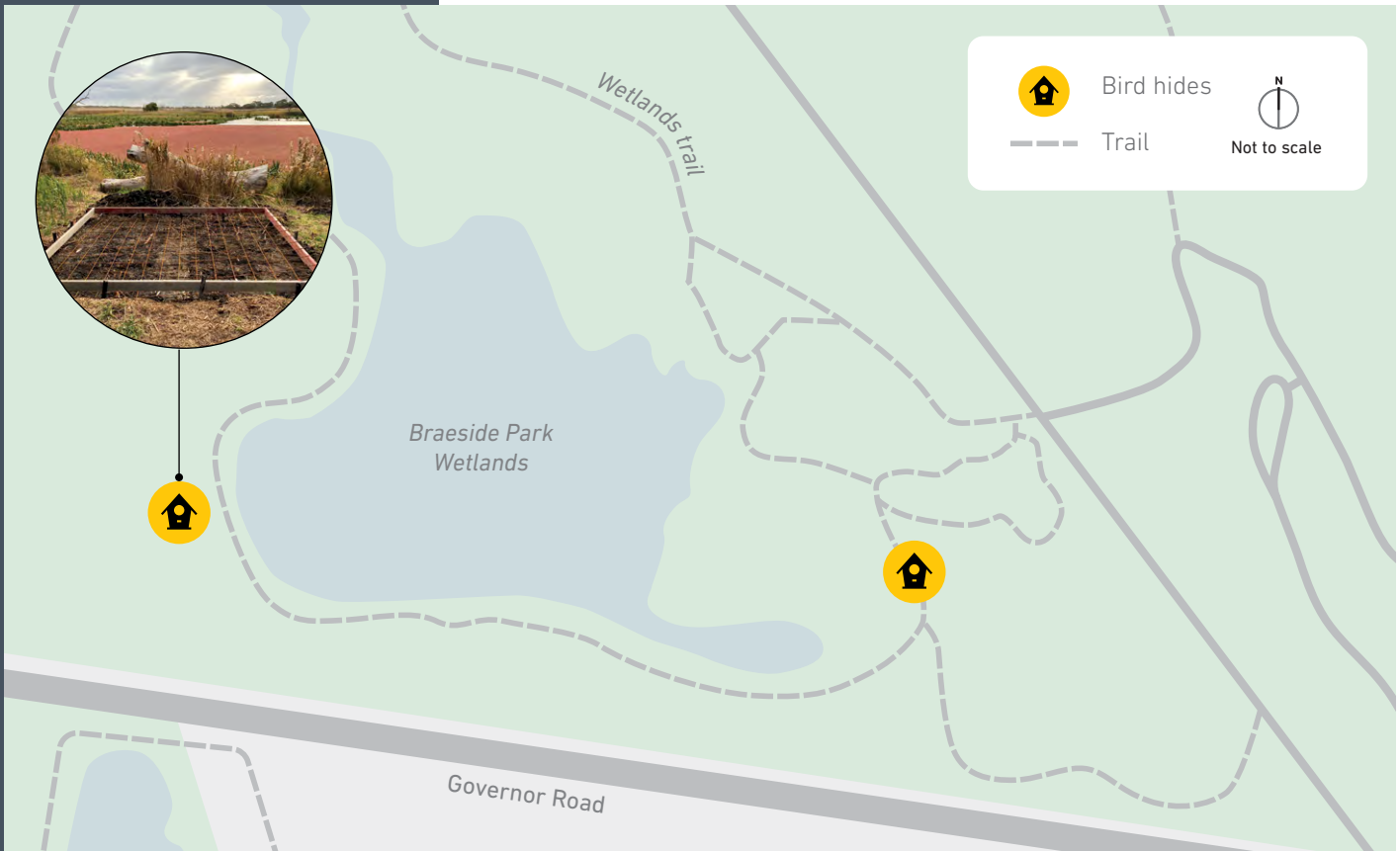
Construction impacts

We'll use trucks, cranes, excavators, piling rigs and other machinery to complete these works. You may experience some noise and vibration and be able to see machinery from time to time. We may also need to remove trees and vegetation where it's unavoidable.

We'll sometimes need to temporarily close lanes on local roads, reduce speed limits, move safety barriers and detour pedestrian paths affected by our works.

We'll do our best to minimise our construction impacts and will continue to monitor noise and vibration levels during the works.





Duck for cover

We've worked with Parks Victoria and the Dingley Village Men's Shed to start building two new shelters at the Braeside Park Wetlands for park visitors to observe local wildlife.

These shelters, called bird hides, provide park visitors a covered space to watch local fauna like ducks, pelicans and other wildlife in Braeside Park without disturbing their natural habitat.

We've laid the concrete base and purchased the two bird hide kits to be built by the Dingley Village Men's Shed to help provide the local community with another way to enjoy Braeside Park.

Once completed in late July, the bird hides will feature a viewing window nearly a metre wide and a metre tall.

Community planting day

Come and join our community planting day at the pedestrian underpass at Braeside Park from **10am to 12.30pm on Saturday 31 July**. With your help, we'll plant 2,520 Black Anther Lily, Smooth Flax Lily, Cushion Bush and Spiny Salt Bush plants to enhance the look and feel of the area.

Safety is our key priority

Work is continuing safely on Victoria's Big Build, our biggest transport upgrade ever. Construction on large-scale public infrastructure projects is critical and the health and safety of our workforce and community remains our top priority.

Strict COVIDsafe Plans are in place on all project sites across Victoria. For more information and advice about the coronavirus (COVID-19), please visit coronavirus.vic.gov.au.

SMS service

You can now receive text messages about changes to traffic, access to homes and businesses and other vital project information.

To sign up, text **Mordi** to **0499 073 073**, or visit our website.

Keeping you informed

To help keep you up to date on our works, we've developed an online interactive map to provide timely information about our current and planned works and disruptions.

With works continuing, we encourage you to view the interactive map at roadprojects.vic.gov.au/mordi-works.

You can also subscribe to receive email updates at roadprojects.vic.gov.au/contact/email-sms-updates.

Thank you for your understanding while we complete these important works.

Contact us

contact@roadprojects.vic.gov.au
1800 105 105

Major Road Projects Victoria
GPO Box 4509, Melbourne VIC 3001

Follow us on social media

     @roadprojectsvic



For languages other than English, please call 9209 0147

Please contact us if you would like this information in an accessible format

If you need assistance because of a hearing or speech impairment, please visit relayservice.gov.au